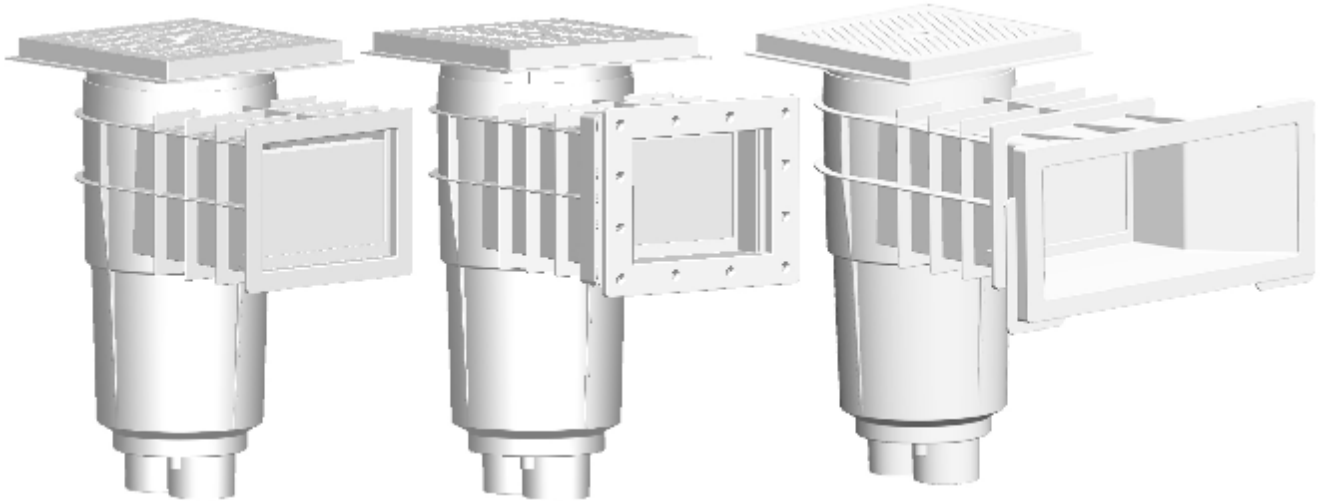


# AUTOMATIC SURFACESKIMMER

## INSTALLATION, OPERATION & PARTS



SKIMMER IS DESIGNED AND INTENDED TO  
FILTER WATER IN SWIMMING POOL



### WARNING

**Before installing this product, read and follow all warning notices and instructions accompanying to this product. Failure to follow safety warnings and instructions can result in severe injury, death, or property damage.**

### Important Notice

**Attention Installer.**  
**This manual contains important information about the installation, operation and safety use of this product. This information should be given to the owner/operator of this equipment.**

## Installation (91027,91028)

1. For optimum skimming action, skimmer should be placed relative to prevailing wind and water direction. Consult pool manufacturer 's instruction for placement recommendations.
2. Assemble piping and pipe fittings to skimmer. All piping must confirm to local and state plumbing and sanitary codes.
3. Long piping runs. For best efficiency, use the fewest possible fittings and large diameter pipe.

### \* CAUTION \*

**When gluing PVC Pipe into ABS Skimmer, you must use the primer as recommended by the glue manufacturer. This will ensure PVC to ABS Cement compatibility and a leak free joint.**

4. Seal off any unused skimmer ports with o-ring styled plugs.

### \* CAUTION \*

**For sealing skimmer ports, use only the plugs and o-ring provided (parts and accessories 5) do not use tapered metal plugs as this will void manufacturer 's warranty. When using threaded plastic pipe fittings for skimmer hook up, use only sealant and tighten fittings hand tight plus 2 turns maximum. Do not over tighten! If skimmer must be bypassed for line pressure testing, use only commercially available test kits with o-ring sealing provisions.**

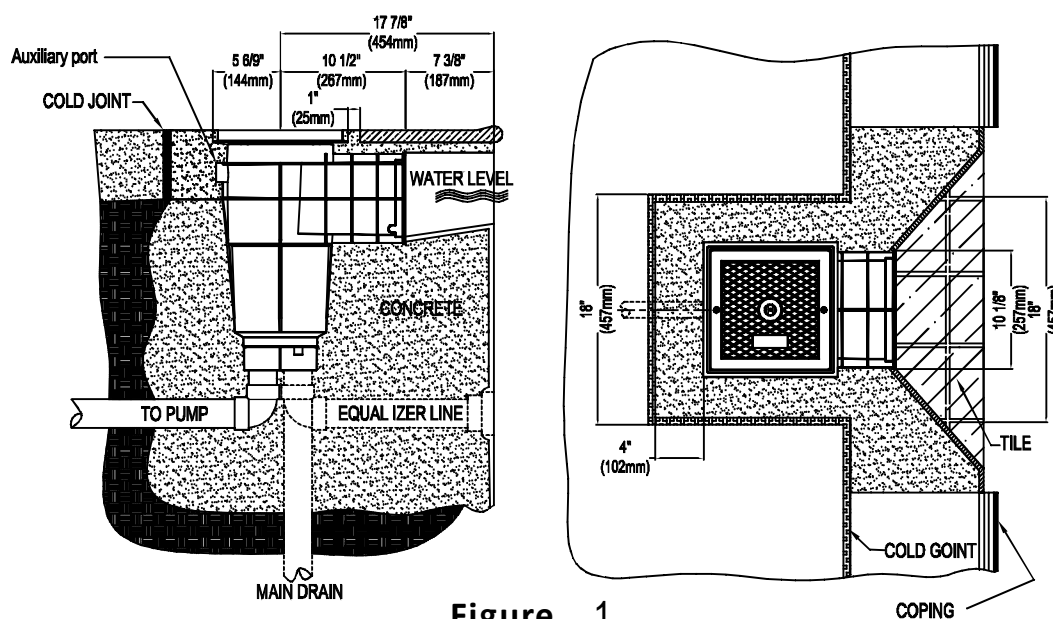
5. Support skimmer securely in position. The deck ring collar has a friction fit that allows (1-3 6/13" ) of vertical adjustment. Additional collars may be stacked upon each other to accommodate deck height as needed.

### \* CAUTION \*

**Insure piping is adequately supported on undisturbed earth. If additional backfilling and tamping is necessary, do not stress pipe or skimmer port by lifting or moving pipe after skimmer port connecting have been made.**

6. Structural concrete should be applied in a monolithic pour, in conjunction with a cold joint as shown in figure 1.

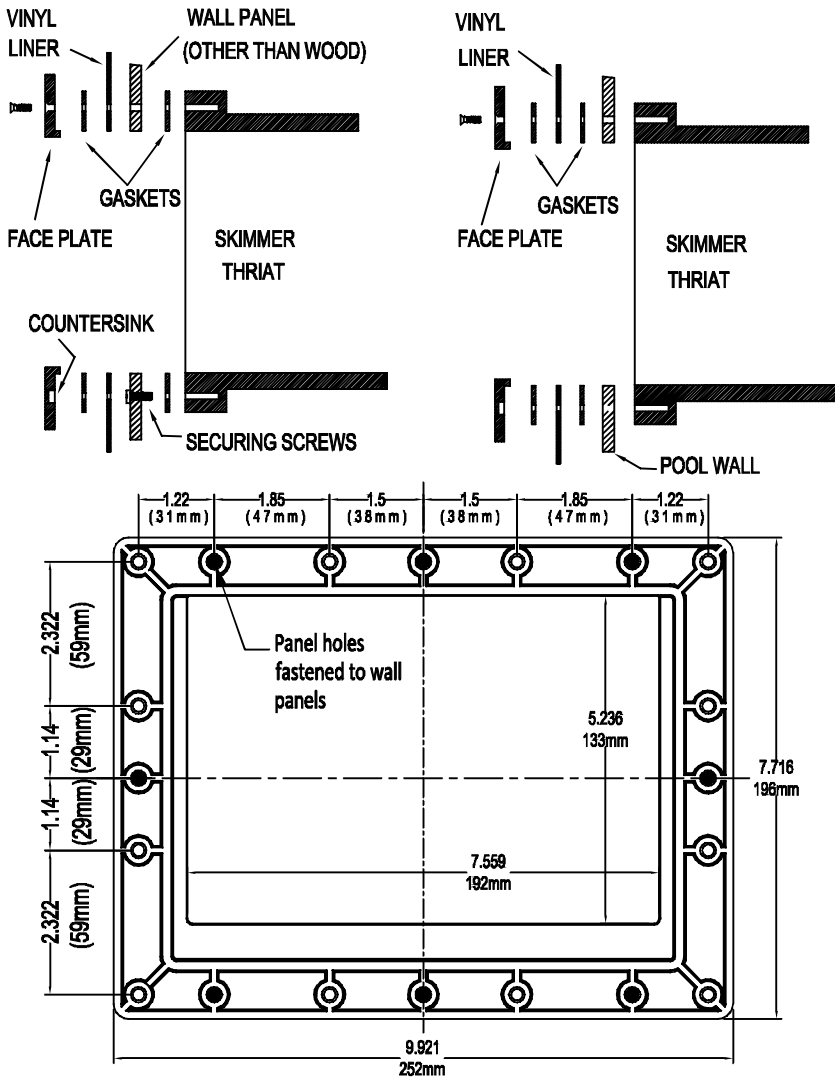
### TYPICAL GUNITE/CONCRETE INSTALLATION



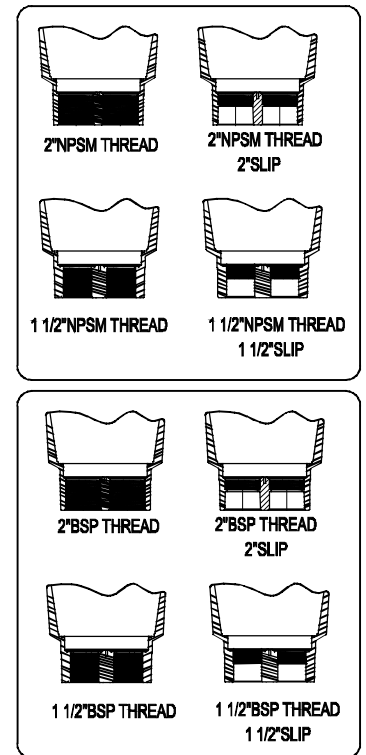
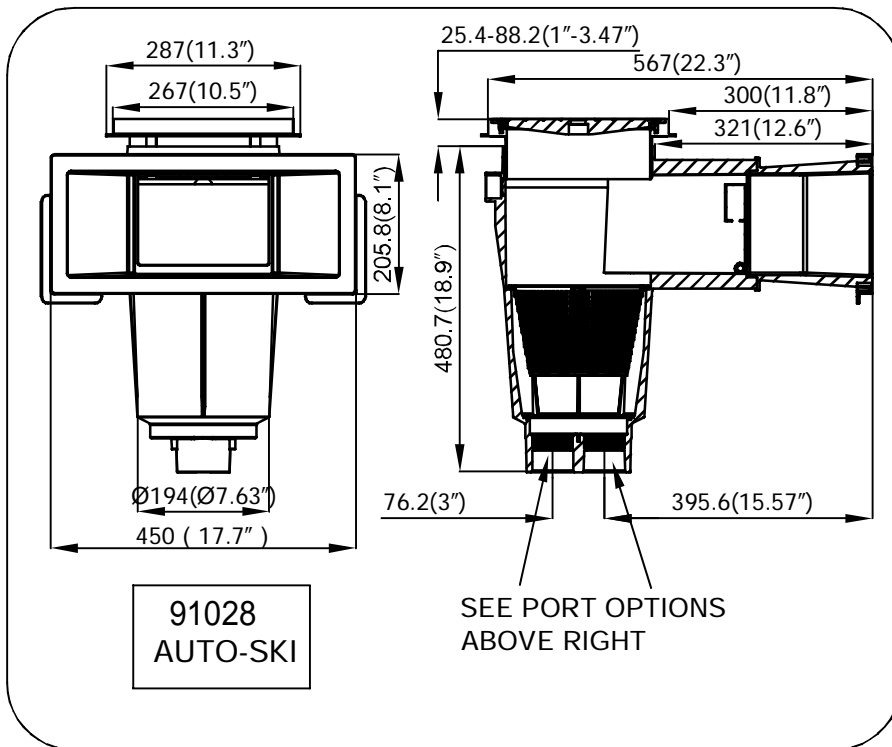
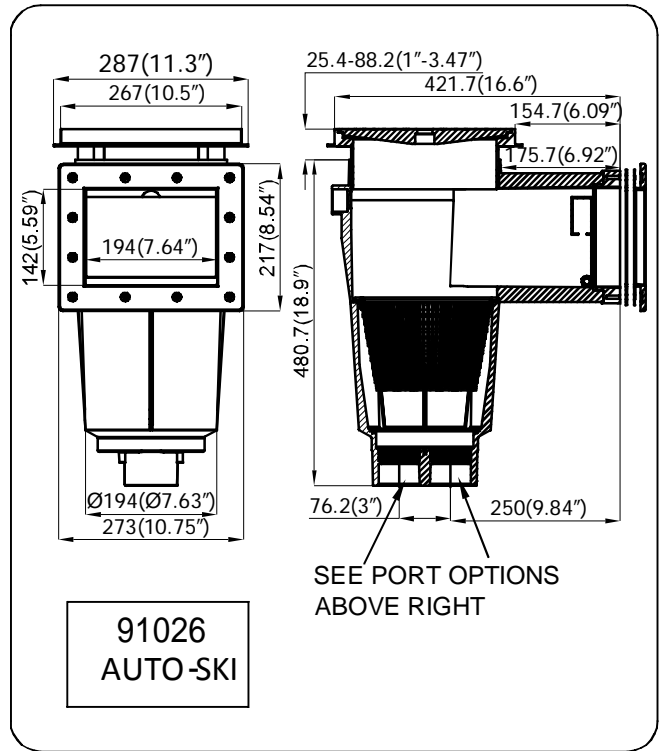
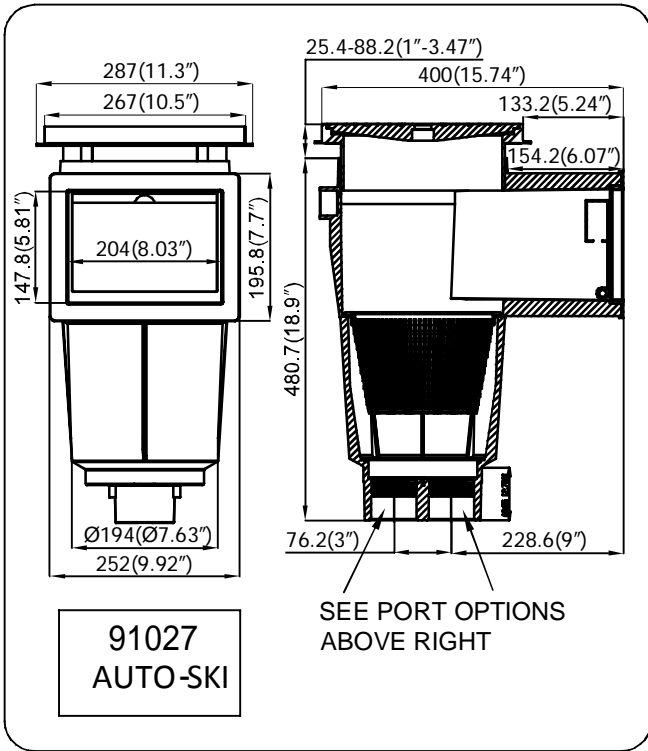
# Installation (91026)

1. For optimum skimming action, skimmer should be placed relative to prevailing wind and water direction. Consult pool manufacturer's instruction for placement recommendations.
2. Drill and cut out wall panel section per dimensions. ( The dimension's use according to figure2. )
3. Place gasket on skimmer face, making sure holes in gasket align with holes in skimmer face. (A very light application of adhesive cement will assist in holding gasket in place).
4. Align skimmer face and gasket with drilled panel holes with the two pan head securing screws.
5. If vinyl liner pool, install liner before proceeding with Step 6.
6. Align second gasket and face plate and fasten tightly to skimmer face with screws. If vinyl liner pool, pierce liner through face plate holes one at a time prior to inserting screws. Screws secure through 1. Face Plate; 2. Gasket; 3. Liner; 4. Wall Panel; 5. Gasket; 6. Into Skimmer Face.
7. If vinyl liner pool, cut out liner along inside edges of face plate.

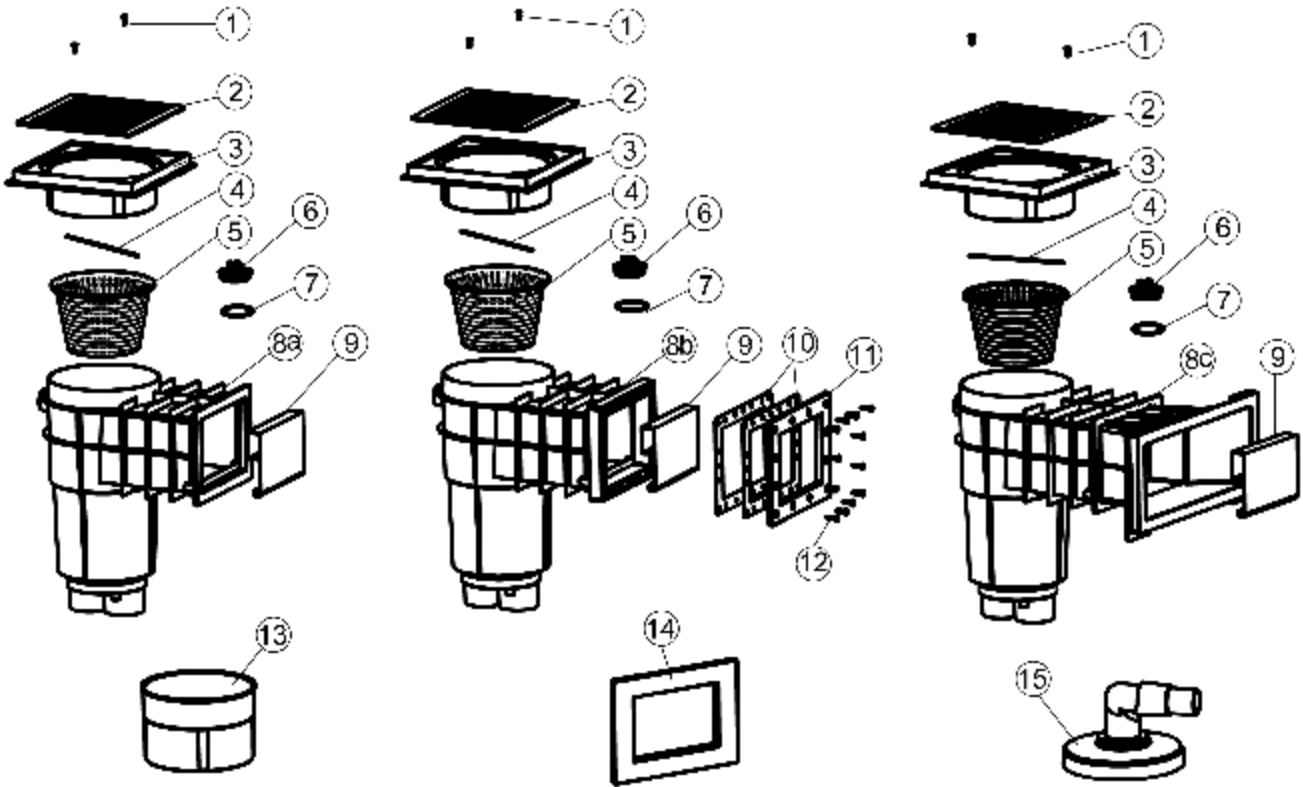
**Figure . 2**



### Figure 3 Dimensions



## PARTS AND ACCESSORIES



Number	Item no:	Description	Quantity Including
1.	65223001	SCREW M5*16	2
2.	91920	COVER	1
3.	649102605	ADJUSTING COLLAR	1
4.	65759009	BASKET HANDIE	1
5.	649102603	BASKET	1
6.	649102607	2" PLUG	1
7.	6543103080	O-RING	1
8a	649102671	CONCRETE BODY	1
8b	949102672	PVC BODY	1
8c	649102675	WIDE MOUTH CONCRETE BODY	1
9.	649102674	WEIR	1
10.	649102608	STANDARD GASKET	2
11.	81904	STANDARD FACE PLATE	1
12.	652110100	SCREW ST5.5*25	12
<b>Optional Accessories</b>			
13.	649102609	EXTENSION COLLAR	-
14.	91907	FACEPLATE(91026)	-
15.	49102611003	VACUUM PLATE	-

## OPERATION

To obtain best skimmer performance, the pool's hydraulic system must be designed to flow from 10 GPM to 55 GPM per skimmer. This ensures an adequate flow of water over the skimmer's weir. The amount of flow to the pump or from the main drain / equalizer line is regulated by the trimmer plate(Figure.3) to adjust the flow to the pump move trimmer plate over pump outlet port until desired flow is achieved , to adjust the flow of main drain/ equalizer, move trimmer plate over main drain/equalizer inlet port until desired flow is achieved.

The water level of the pool should be maintained at approximately half way up the skimmer opening. The water level should not be allowed to get within 1" of the top or bottom of the opening. If the water level drops too far, air might enter the hydraulic system..

### \* \* WARNING \* \*

**Air entering the hydraulic system could become trapped and pressurized in the system. Trapped air and improperly closed filters, pumps, chlorinators or other equipment could cause the equipment to separate, causing serious personal injury and /or major property damage.**

## TROUBLESHOOTING GUIDE

Problems	Cause	Remedy
Pool surface not clean, inadequate skimming effect.	Skimmer basket obstructed.	Clean skimmer basket.
	Inadequate pool water level.	Raise/lower pool level to recommended heights.
	Inadequate pool water circulation.	Position pool water return fittings increase surface circulation.
Pool surface clean, bottom dirty.	Main drain obstructed.	Clean main drain. Remove obstruction from main drain line.
	Inadequate pool water circulation.	Position pool water return fittings to increase circulation at bottom of pool.
Air returning to pool.	Low pool water level.	Raise pool water level to recommended height.