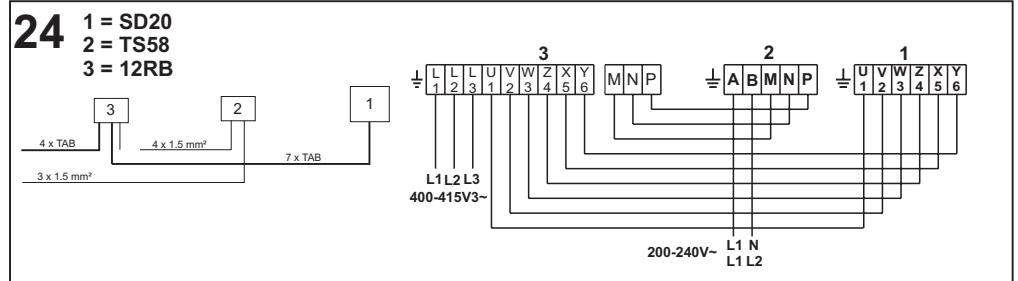
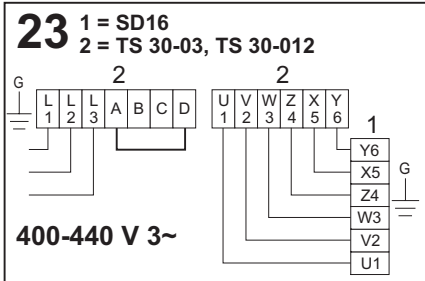
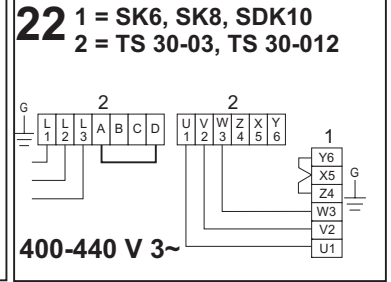
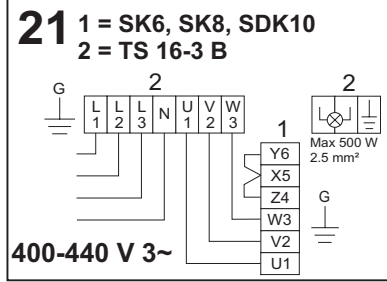
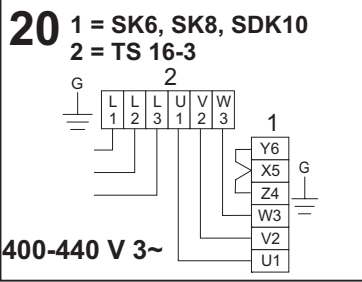
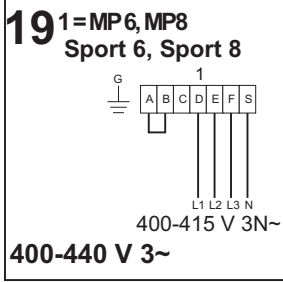
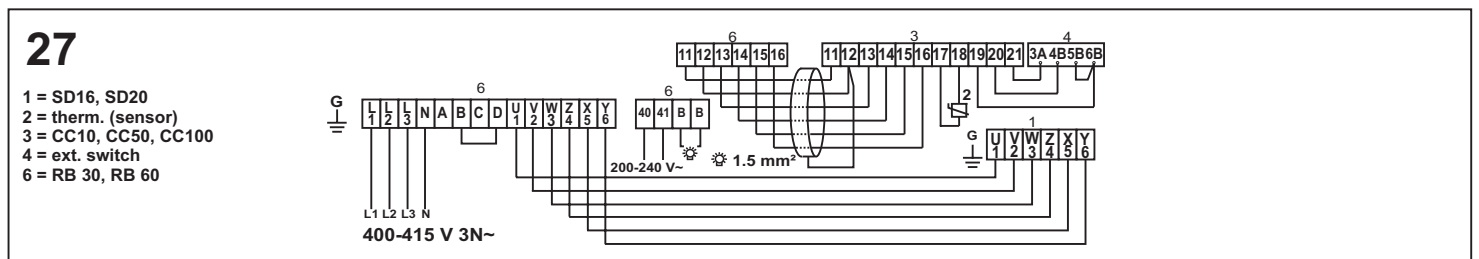
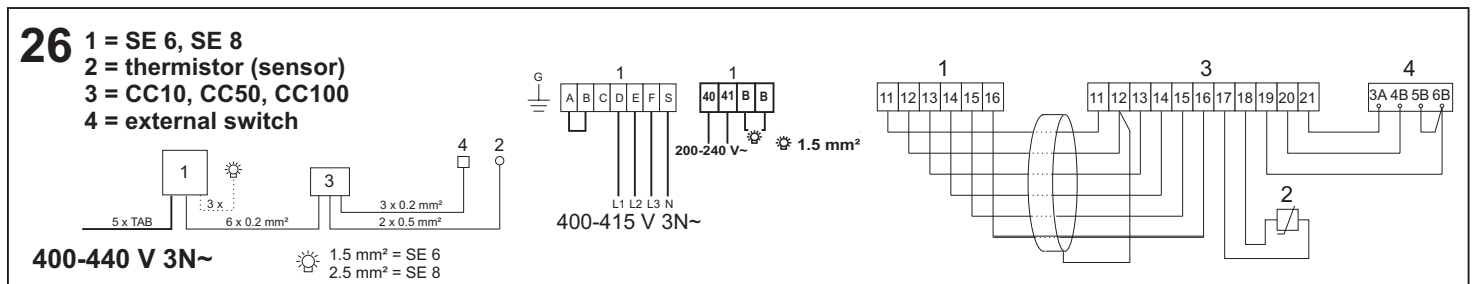
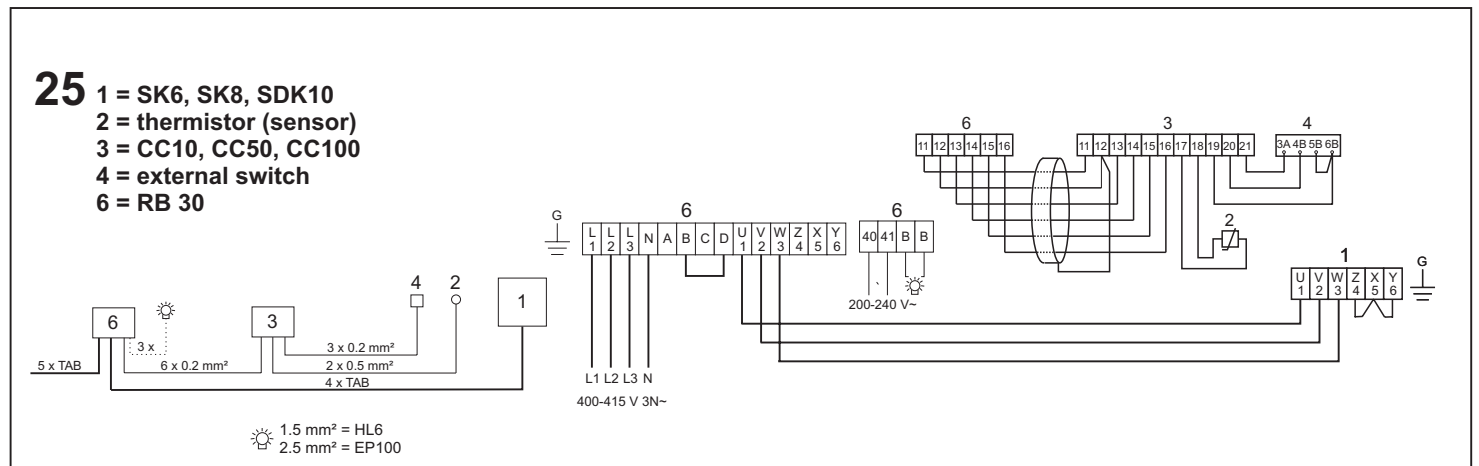


400 - 415 - 440 V 3~



WARNING! THIS APPLIANCE MUST BE EARTHED!

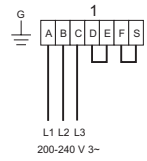
400 - 415 - 440 V 3N~



WARNING! THIS APPLIANCE MUST BE EARTHED!

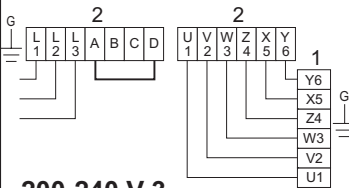
200 - 208 - 230 - 240 V 3~

28 1 = MP6, MP8
Sport 6, Sport 8



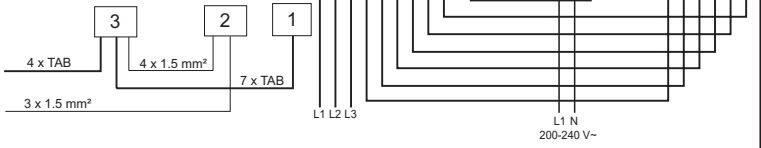
200-240 V 3~

29 1 = SK6, SK8, SDK10
2 = TS 30-03, TS 30-012



200-240 V 3~

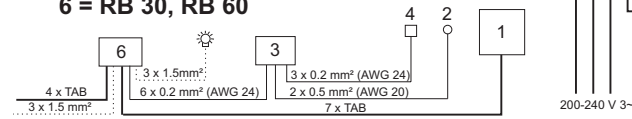
30 1 = SD16, SD20
2 = TS 58
3 = 12 RB



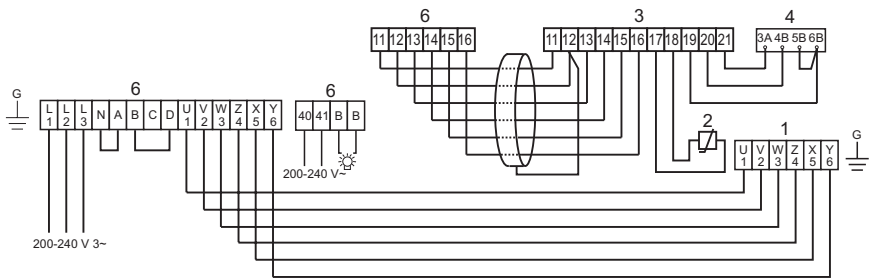
200-240 V 3~

WARNING! THIS APPLIANCE MUST BE EARTHED!

31 1 = SK6, SK8, SDK10,
SD16, SD20
2 = thermistor (sensor)
3 = CC10, CC50, CC100
4 = external switch
6 = RB 30, RB 60

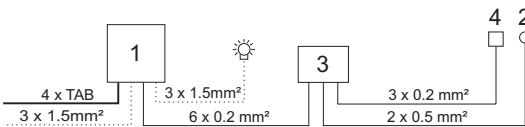


200-240 V 3~

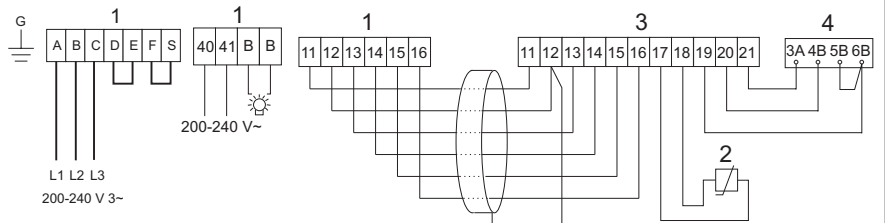


WARNING! THIS APPLIANCE MUST BE EARTHED!

32 1 = SE 6, SE 8
2 = thermistor (sensor)
3 = CC10, CC50, CC100
4 = external switch



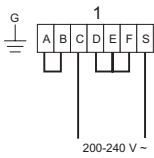
200-240 V 3~



WARNING! THIS APPLIANCE MUST BE EARTHED!

200 - 208 - 230 - 240 V~

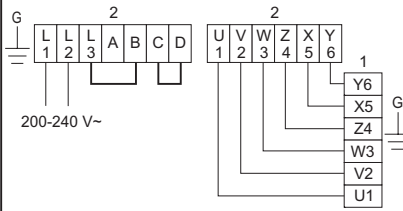
33 1 = MP6, MP8
Sport 6, Sport8



200-240 V~

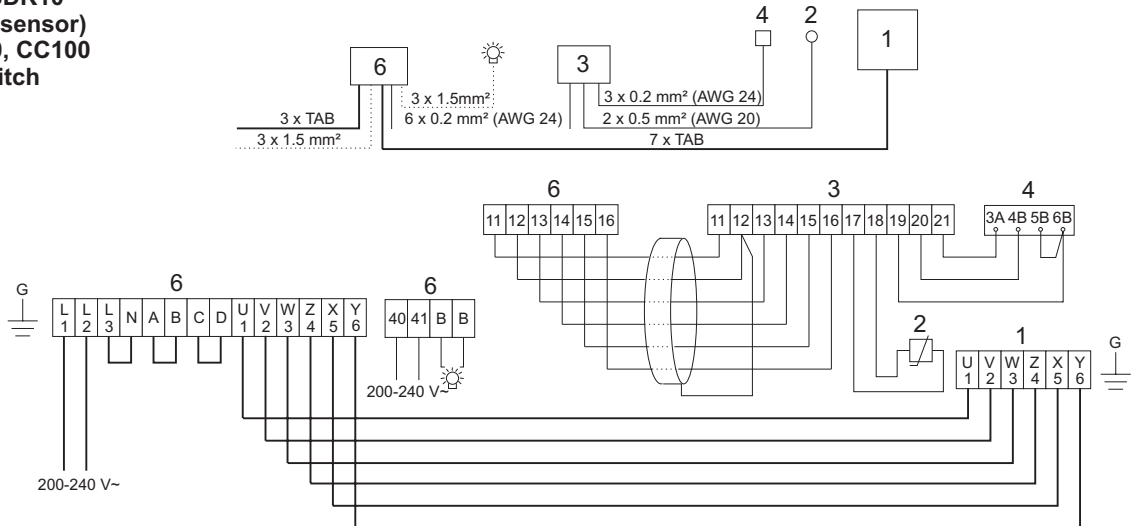
WARNING! THIS APPLIANCE MUST BE EARTHED!

34 1 = SK6, SK8, SDK10
2 = TS 30-03, TS 30-012



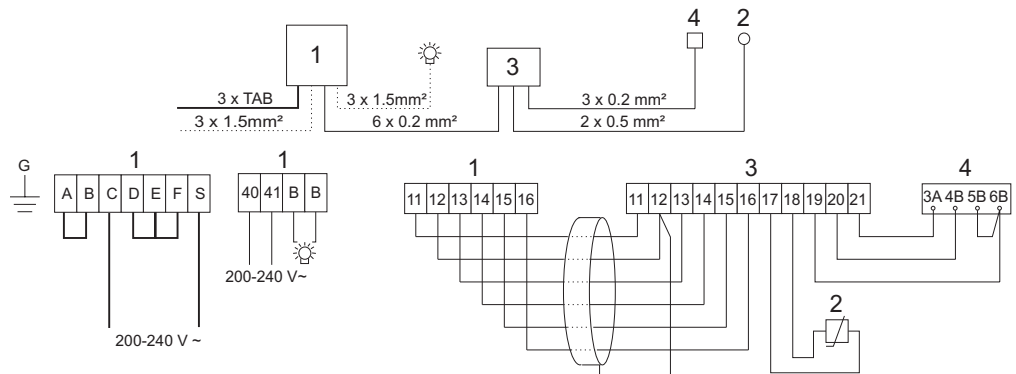
200-240 V~

35 1 = SK6, SK8, SDK10
2 = thermistor (sensor)
3 = CC10, CC50, CC100
4 = external switch
6 = RB 30



200-240 V~

36 1 = SE 6, SE 8
2 = thermistor (sensor)
3 = CC10, CC50, CC100
4 = external switch



200-240 V~

WARNING! THIS APPLIANCE MUST BE EARTHED!